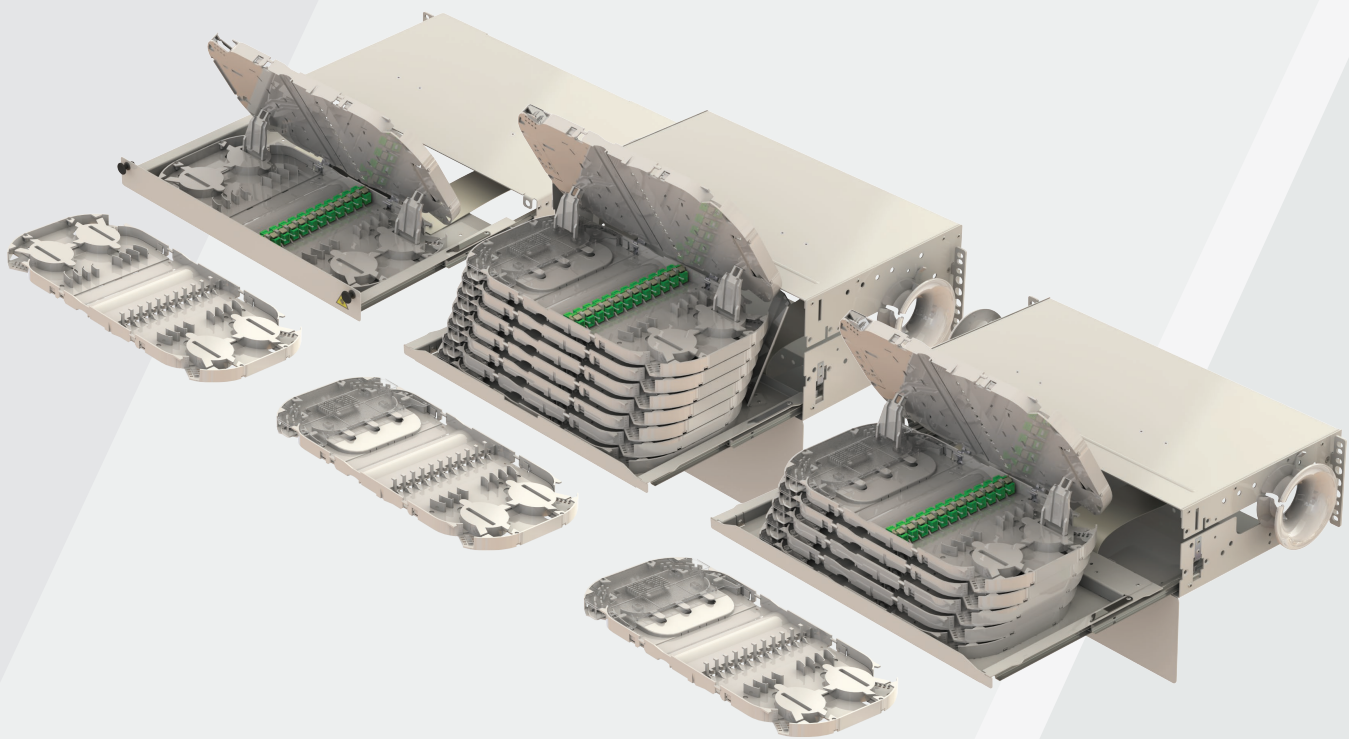


# CopperOn™

"SETTING THE STANDARD IN STRUCTURED CABLING"

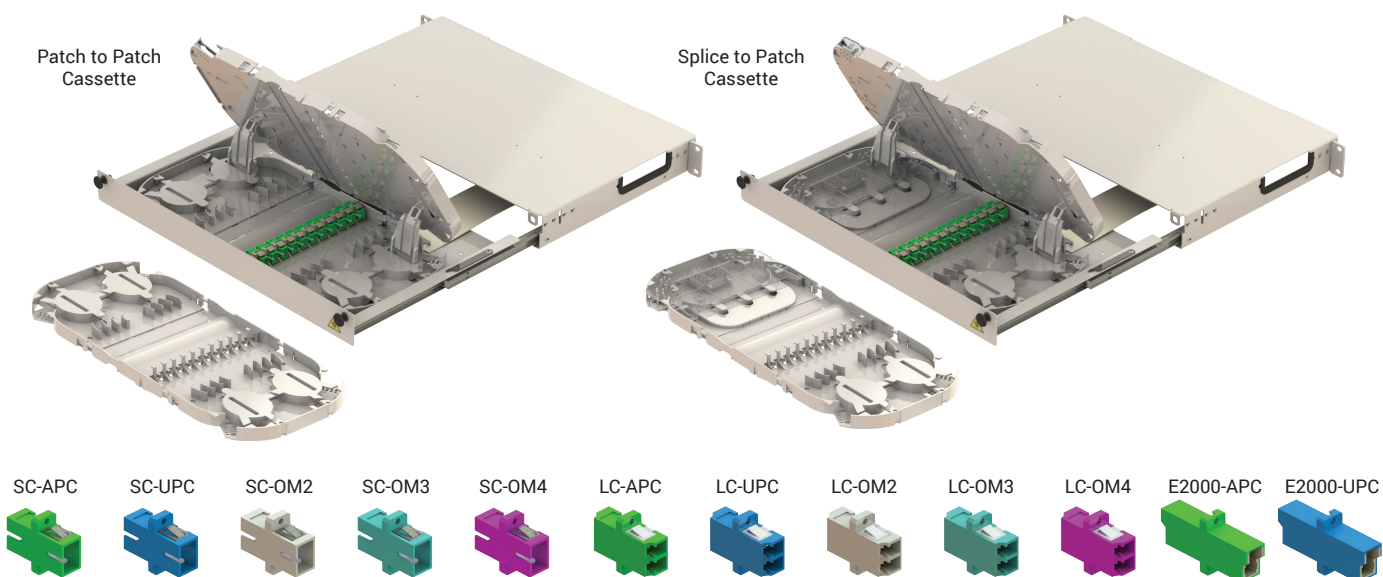


## Fiber Management Shelves

## 19" PP/SP 1U Fiber Management Shelves

Fiber Management Shelves are used to terminate and distribute optical fiber cables, termination box is ranging from 12 ports to 96 ports. They are convenient equipment to organize and connect the fiber optic links. It is suitable for the use in telecommunication network, central office optical cable system and premise fiber networks.

Typical type of our fiber panels are rack mounted, they are with optional different kinds of fiber optic adapters ports and pre-installed inner trays and accessories, optional pigtailed with different types



### Features

- Clean: Both sides easily accessible for cleaning adapters
- Safe: Laser light oriented perpendicularly to the operator
- Accessible: Full front access at both sides of connection
- Visible: Patch cords do not hamper access or visibility of ports
- Easy reconnection within tray or shelf without uncontrolled overlengths
- Manipulation of patch cords does not cause fiber loss
- Connectors in trays are more secured than in front facing patch panels
- Shelves are painted (powder-coated) in light grey (RAL 7035)

### Dimensions

Chassis Size	19"
Shelf Unit Height	1U
Width (w/ mounting brackets)	481
Width (w/o mounting brackets)	443
Height	44
Depth	276

### Model Coding

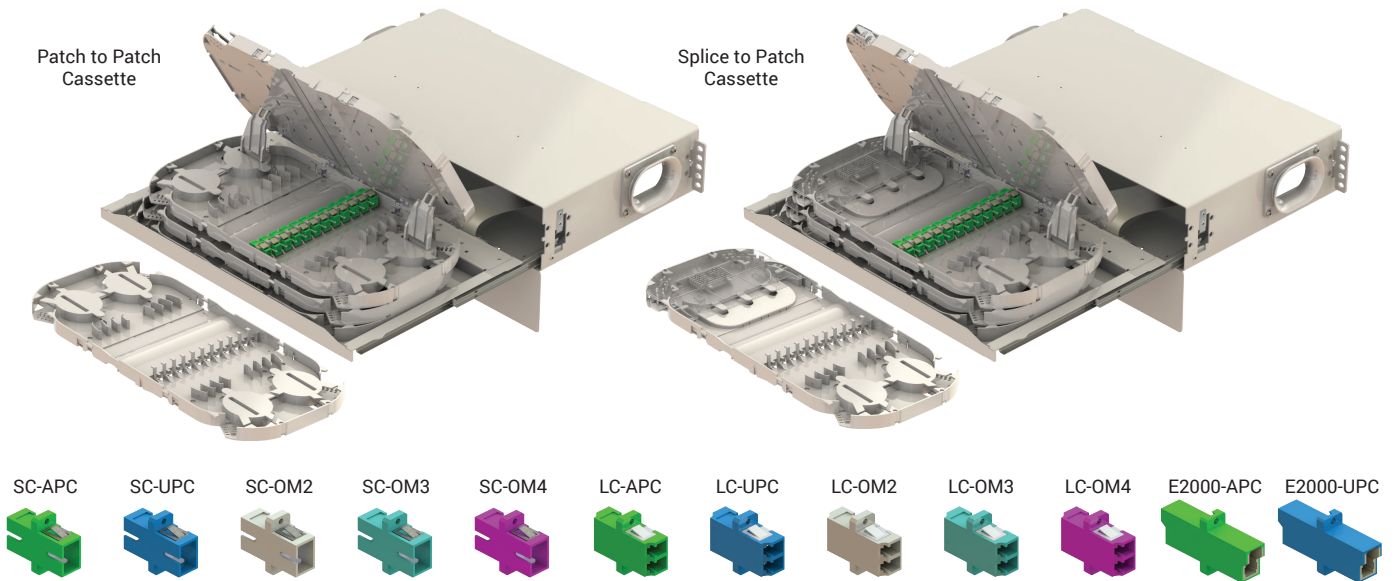
Patch to Patch	
Order Code	Description
FM19-1U-PP-SM-SC-24	Single Mode, 24 SC/UPC
FM19-1U-PP-SM-SA-24	Single Mode, 24 SC/APC
FM19-1U-PP-M2-SC-24	Multi Mode(OM2), 24 SC/UPC
FM19-1U-PP-M3-SC-24	Multi Mode(OM3), 24 SC/UPC
FM19-1U-PP-M4-SC-24	Multi Mode(OM4), 24 SC/UPC
FM19-1U-PP-SM-LC-48	Single Mode, 48 LC/UPC
FM19-1U-PP-SM-LA-48	Single Mode, 48 LC/APC
FM19-1U-PP-M2-LC-48	Multi Mode(OM2), 48 LC/UPC
FM19-1U-PP-M3-LC-48	Multi Mode(OM3), 48 LC/UPC
FM19-1U-PP-M4-LC-48	Multi Mode(OM4), 48 LC/UPC
FM19-1U-PP-SM-E2-24	Single Mode, 24 E2000/UPC
FM19-1U-PP-SM-EA-24	Single Mode, 24 E2000/APC

Splice to Patch	
Order Code	Description
FM19-1U-SP-SM-SC-24	Single Mode, 24 SC/UPC
FM19-1U-SP-SM-SA-24	Single Mode, 24 SC/APC
FM19-1U-SP-M2-SC-24	Multi Mode(OM2), 24 SC/UPC
FM19-1U-SP-M3-SC-24	Multi Mode(OM3), 24 SC/UPC
FM19-1U-SP-M4-SC-24	Multi Mode(OM4), 24 SC/UPC
FM19-1U-SP-SM-LC-48	Single Mode, 48 LC/UPC
FM19-1U-SP-SM-LA-48	Single Mode, 48 LC/APC
FM19-1U-SP-M2-LC-48	Multi Mode(OM2), 48 LC/UPC
FM19-1U-SP-M3-LC-48	Multi Mode(OM3), 48 LC/UPC
FM19-1U-SP-M4-LC-48	Multi Mode(OM4), 48 LC/UPC
FM19-1U-SP-SM-E2-24	Single Mode, 24 E2000/UPC
FM19-1U-SP-SM-EA-24	Single Mode, 24 E2000/APC

## 19" PP/SP 2U Fiber Management Shelves

Fiber Management Shelves are used to terminate and distribute optical fiber cables, termination box is ranging from 12 ports to 96 ports. They are convenient equipment to organize and connect the fiber optic links. It is suitable for the use in telecommunication network, central office optical cable system and premise fiber networks.

Typical type of our fiber panels are rack mounted, they are with optional different kinds of fiber optic adapters ports and pre-installed inner trays and accessories, optional pigtailed with different types.



### Features

- Clean: Both sides easily accessible for cleaning adapters
- Safe: Laser light oriented perpendicularly to the operator
- Accessible: Full front access at both sides of connection
- Visible: Patch cords do not hamper access or visibility of ports
- Easy reconnection within tray or shelf without uncontrolled overlengths
- Manipulation of patch cords does not cause fiber loss
- Connectors in trays are more secured than in front facing patch panels
- Shelves are painted (powder-coated) in light grey (RAL 7035)

### Dimensions

Chassis Size	19"
Shelf Unit Height	2U
Width (w/ mounting brackets)	481
Width (w/o mounting brackets)	443
Height	88
Depth	276

### Model Coding

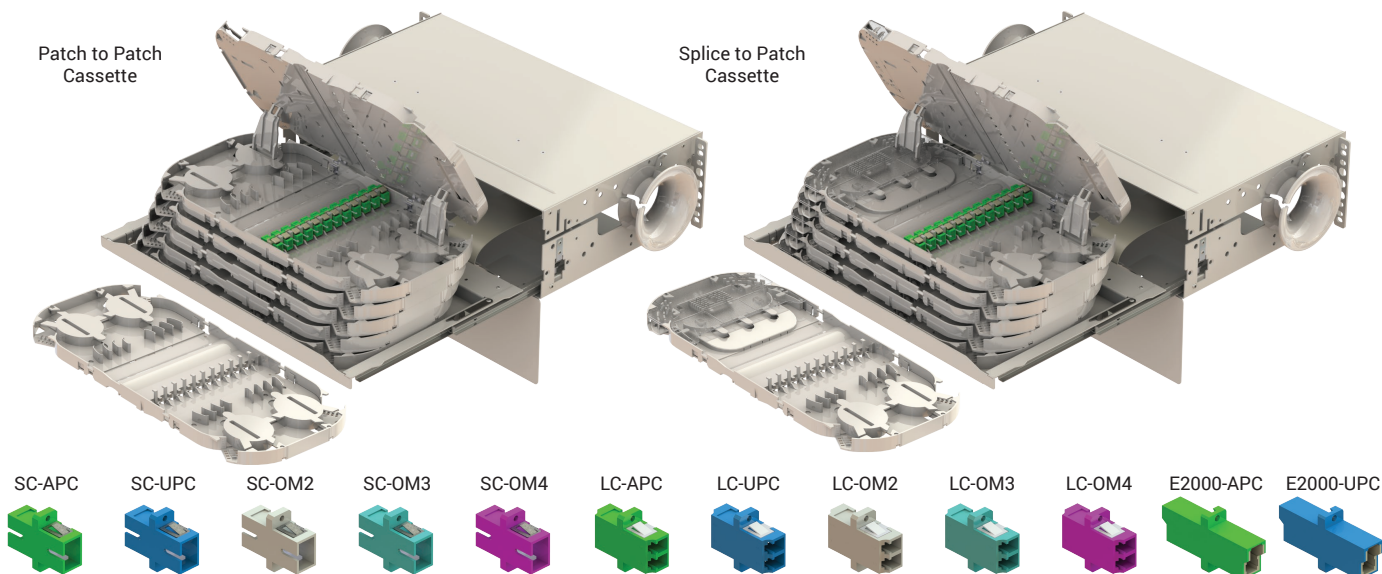
Patch to Patch	
Order Code	Description
FM19-2U-PP-SM-SC-48	Single Mode, 48 SC/UPC
FM19-2U-PP-SM-SA-48	Single Mode, 48 SC/APC
FM19-2U-PP-M2-SC-48	Multi Mode(OM2), 48 SC/UPC
FM19-2U-PP-M3-SC-48	Multi Mode(OM3), 48 SC/UPC
FM19-2U-PP-M4-SC-48	Multi Mode(OM4), 48 SC/UPC
FM19-2U-PP-SM-LC-96	Single Mode, 96 LC/UPC
FM19-2U-PP-SM-LA-96	Single Mode, 96 LC/APC
FM19-2U-PP-M2-LC-96	Multi Mode(OM2), 96 LC/UPC
FM19-2U-PP-M3-LC-96	Multi Mode(OM3), 96 LC/UPC
FM19-2U-PP-M4-LC-96	Multi Mode(OM4), 96 LC/UPC
FM19-2U-PP-SM-E2-48	Single Mode, 48 E2000/UPC
FM19-2U-PP-SM-EA-48	Single Mode, 48 E2000/APC

Splice to Patch	
Order Code	Description
FM19-2U-SP-SM-SC-48	Single Mode, 48 SC/UPC
FM19-2U-SP-SM-SA-48	Single Mode, 48 SC/APC
FM19-2U-SP-M2-SC-48	Multi Mode(OM2), 48 SC/UPC
FM19-2U-SP-M3-SC-48	Multi Mode(OM3), 48 SC/UPC
FM19-2U-SP-M4-SC-48	Multi Mode(OM4), 48 SC/UPC
FM19-2U-SP-SM-LC-96	Single Mode, 96 LC/UPC
FM19-2U-SP-SM-LA-96	Single Mode, 96 LC/APC
FM19-2U-SP-M2-LC-96	Multi Mode(OM2), 96 LC/UPC
FM19-2U-SP-M3-LC-96	Multi Mode(OM3), 96 LC/UPC
FM19-2U-SP-M4-LC-96	Multi Mode(OM4), 96 LC/UPC
FM19-2U-SP-SM-E2-48	Single Mode, 48 E2000/UPC
FM19-2U-SP-SM-EA-48	Single Mode, 48 E2000/APC

## 19" PP/SP 3U Fiber Management Shelves

Fiber Management Shelves are used to terminate and distribute optical fiber cables, termination box is ranging from 12 ports to 96 ports. They are convenient equipment to organize and connect the fiber optic links. It is suitable for the use in telecommunication network, central office optical cable system and premise fiber networks.

Typical type of our fiber panels are rack mounted, they are with optional different kinds of fiber optic adapters ports and pre-installed inner trays and accessories, optional pigtails with different types.



### Features

- Clean: Both sides easily accessible for cleaning adapters
- Safe: Laser light oriented perpendicularly to the operator
- Accessible: Full front access at both sides of connection
- Visible: Patch cords do not hamper access or visibility of ports
- Easy reconnection within tray or shelf without uncontrolled overlengths
- Manipulation of patch cords does not cause fiber loss
- Connectors in trays are more secured than in front facing patch panels
- Shelves are painted (powder-coated) in light grey (RAL 7035)

### Dimensions

Chassis Size	19"
Shelf Unit Height	3U
Width (w/ mounting brackets)	481
Width (w/o mounting brackets)	443
Height	122
Depth	276

### Model Coding

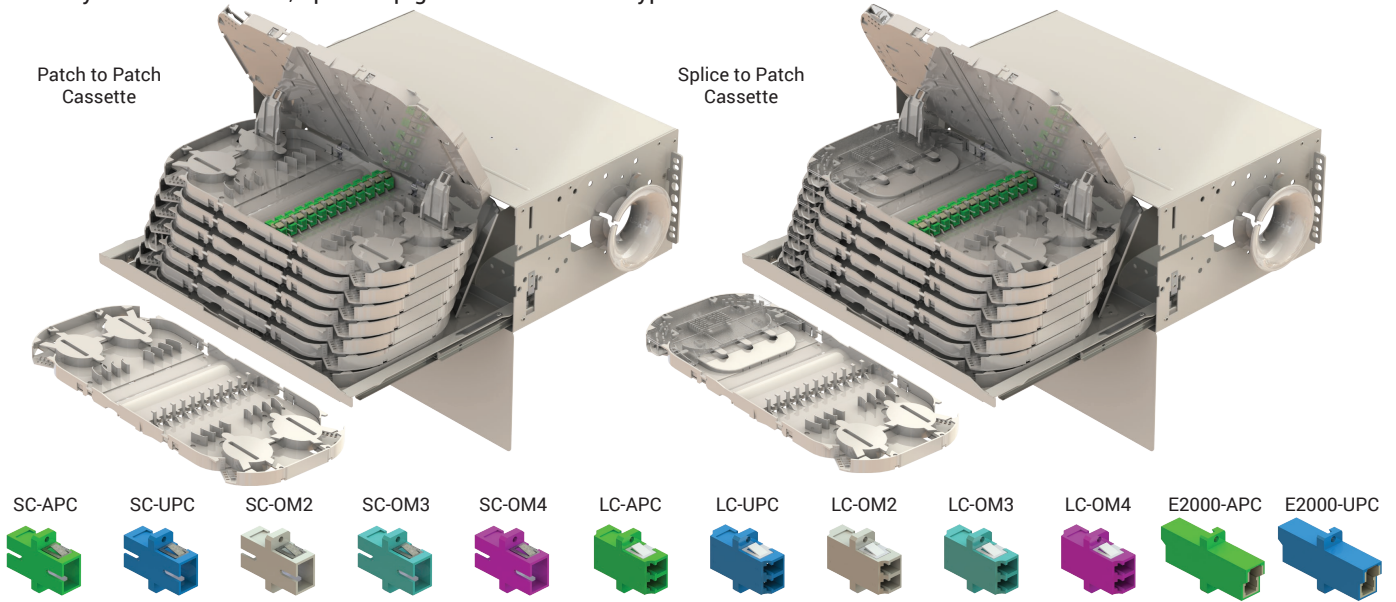
Patch to Patch	
Order Code	Description
FM19-3U-PP-SM-SC-72	Single Mode, 72 SC/UPC
FM19-3U-PP-SM-SA-72	Single Mode, 72 SC/APC
FM19-3U-PP-M2-SC-72	Multi Mode(OM2), 72 SC/UPC
FM19-3U-PP-M3-SC-72	Multi Mode(OM3), 72 SC/UPC
FM19-3U-PP-M4-SC-72	Multi Mode(OM4), 72 SC/UPC
FM19-3U-PP-SM-LC-144	Single Mode, 144 LC/UPC
FM19-3U-PP-SM-LA-144	Single Mode, 144 LC/APC
FM19-3U-PP-M2-LC-144	Multi Mode(OM2), 144 LC/UPC
FM19-3U-PP-M3-LC-144	Multi Mode(OM3), 144 LC/UPC
FM19-3U-PP-M4-LC-144	Multi Mode(OM4), 144 LC/UPC
FM19-3U-PP-SM-E2-72	Single Mode, 72 E2000/UPC
FM19-3U-PP-SM-EA-72	Single Mode, 72 E2000/APC

Splice to Patch	
Order Code	Description
FM19-3U-SP-SM-SC-72	Single Mode, 72 SC/UPC
FM19-3U-SP-SM-SA-72	Single Mode, 72 SC/APC
FM19-3U-SP-M2-SC-72	Multi Mode(OM2), 72 SC/UPC
FM19-3U-SP-M3-SC-72	Multi Mode(OM3), 72 SC/UPC
FM19-3U-SP-M4-SC-72	Multi Mode(OM4), 72 SC/UPC
FM19-3U-SP-SM-LC-144	Single Mode, 144 LC/UPC
FM19-3U-SP-SM-LA-144	Single Mode, 144 LC/APC
FM19-3U-SP-M2-LC-144	Multi Mode(OM2), 144 LC/UPC
FM19-3U-SP-M3-LC-144	Multi Mode(OM3), 144 LC/UPC
FM19-3U-SP-M4-LC-144	Multi Mode(OM4), 144 LC/UPC
FM19-3U-SP-SM-E2-72	Single Mode, 72 E2000/UPC
FM19-3U-SP-SM-EA-72	Single Mode, 72 E2000/APC

## 19" PP/SP 4U Fiber Management Shelves

Fiber Management Shelves are used to terminate and distribute optical fiber cables, termination box is ranging from 12 ports to 96 ports. They are convenient equipment to organize and connect the fiber optic links. It is suitable for the use in telecommunication network, central office optical cable system and premise fiber networks.

Typical type of our fiber panels are rack mounted, they are with optional different kinds of fiber optic adapters ports and pre-installed inner trays and accessories, optional pigtails with different types.



### Features

- Clean: Both sides easily accessible for cleaning adapters
- Safe: Laser light oriented perpendicularly to the operator
- Accessible: Full front access at both sides of connection
- Visible: Patch cords do not hamper access or visibility of ports
- Easy reconnection within tray or shelf without uncontrolled overlengths
- Manipulation of patch cords does not cause fiber loss
- Connectors in trays are more secured than in front facing patch panels
- Shelves are painted (powder-coated) in light grey (RAL 7035)

### Dimensions

Chasis Size	19"
Shelf Unit Height	4U
Width (w/ mounting brackets)	481
Width (w/o mounting brackets)	443
Height	168
Depth	276

### Model Coding

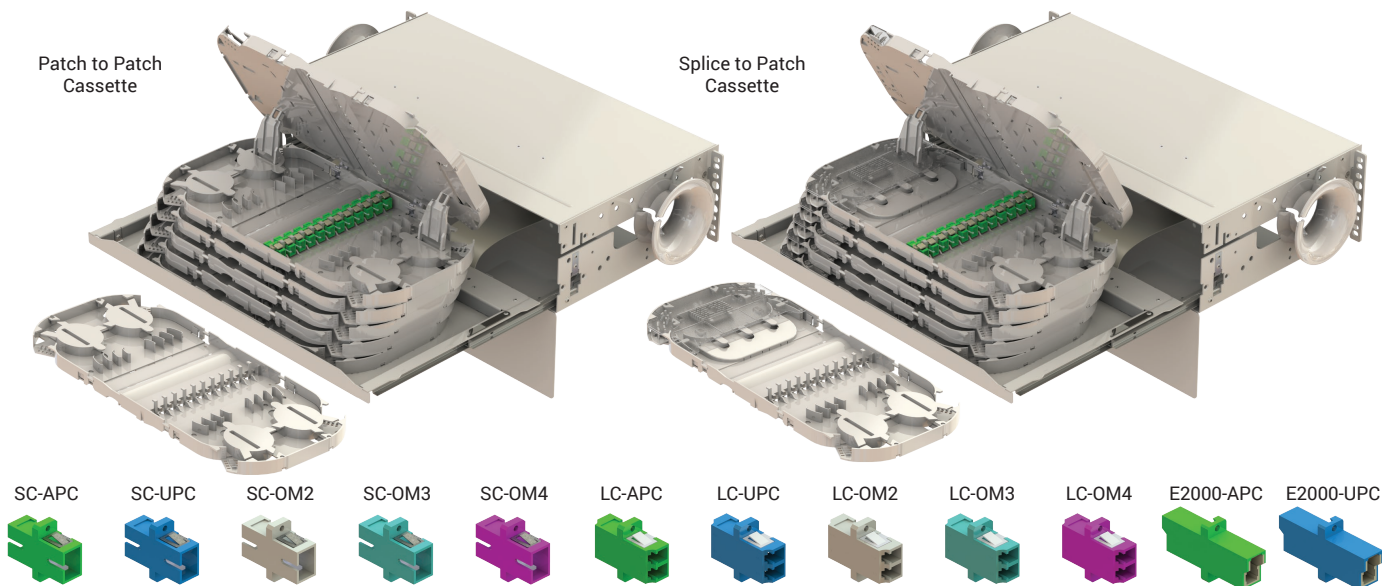
Patch to Patch	
Order Code	Description
FM19-4U-PP-SM-SC-96	Single Mode, 96 SC/UPC
FM19-4U-PP-SM-SA-96	Single Mode, 96 SC/APC
FM19-4U-PP-M2-SC-96	Multi Mode(OM2), 96 SC/UPC
FM19-4U-PP-M3-SC-96	Multi Mode(OM3), 96 SC/UPC
FM19-4U-PP-M4-SC-96	Multi Mode(OM4), 96 SC/UPC
FM19-4U-PP-SM-LC-192	Single Mode, 192 LC/UPC
FM19-4U-PP-SM-LA-192	Single Mode, 192 LC/APC
FM19-4U-PP-M2-LC-192	Multi Mode(OM2), 192 LC/UPC
FM19-4U-PP-M3-LC-192	Multi Mode(OM3), 192 LC/UPC
FM19-4U-PP-M4-LC-192	Multi Mode(OM4), 192 LC/UPC
FM19-4U-PP-SM-E2-96	Single Mode, 96 E2000/UPC
FM19-4U-PP-SM-EA-96	Single Mode, 96 E2000/APC

Splice to Patch	
Order Code	Description
FM19-4U-SP-SM-SC-96	Single Mode, 96 SC/UPC
FM19-4U-SP-SM-SA-96	Single Mode, 96 SC/APC
FM19-4U-SP-M2-SC-96	Multi Mode(OM2), 96 SC/UPC
FM19-4U-SP-M3-SC-96	Multi Mode(OM3), 96 SC/UPC
FM19-4U-SP-M4-SC-96	Multi Mode(OM4), 96 SC/UPC
FM19-4U-SP-SM-LC-192	Single Mode, 192 LC/UPC
FM19-4U-SP-SM-LA-192	Single Mode, 192 LC/APC
FM19-4U-SP-M2-LC-192	Multi Mode(OM2), 192 LC/UPC
FM19-4U-SP-M3-LC-192	Multi Mode(OM3), 192 LC/UPC
FM19-4U-SP-M4-LC-192	Multi Mode(OM4), 192 LC/UPC
FM19-4U-SP-SM-E2-96	Single Mode, 96 E2000/UPC
FM19-4U-SP-SM-EA-96	Single Mode, 96 E2000/APC

## 21" PP/SP 3U Fiber Management Shelves

Fiber Management Shelves are used to terminate and distribute optical fiber cables, termination box is ranging from 12 ports to 96 ports. They are convenient equipment to organize and connect the fiber optic links. It is suitable for the use in telecommunication network, central office optical cable system and premise fiber networks.

Typical type of our fiber panels are rack mounted, they are with optional different kinds of fiber optic adapters ports and pre-installed inner trays and accessories, optional pigtailed with different types.



### Features

- Clean: Both sides easily accessible for cleaning adapters
- Safe: Laser light oriented perpendicularly to the operator
- Accessible: Full front access at both sides of connection
- Visible: Patch cords do not hamper access or visibility of ports
- Easy reconnection within tray or shelf without uncontrolled overlengths
- Manipulation of patch cords does not cause fiber loss
- Connectors in trays are more secured than in front facing patch panels
- Shelves are painted (powder-coated) in light grey (RAL 7035)

### Dimensions

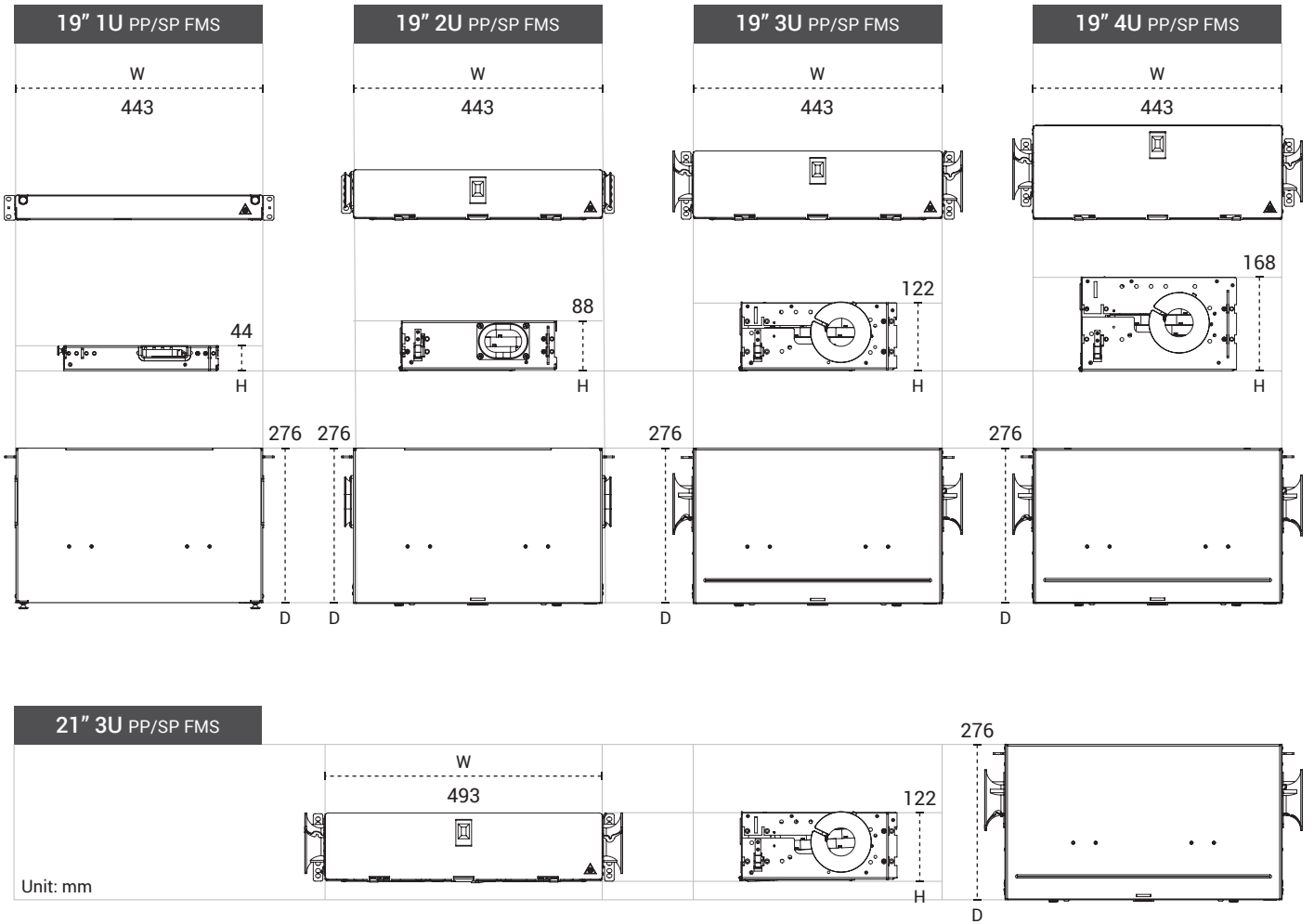
Chassis Size	21"
Shelf Unit Height	3U
Width (w/ mounting brackets)	541
Width (w/o mounting brackets)	493
Height	122
Depth	276

### Model Coding

Patch to Patch	
Order Code	Description
FM21-3U-PP-SM-SC-72	Single Mode, 72 SC/UPC
FM21-3U-PP-SM-SA-72	Single Mode, 72 SC/APC
FM21-3U-PP-M2-SC-72	Multi Mode(OM2), 72 SC/UPC
FM21-3U-PP-M3-SC-72	Multi Mode(OM3), 72 SC/UPC
FM21-3U-PP-M4-SC-72	Multi Mode(OM4), 72 SC/UPC
FM21-3U-PP-SM-LC-144	Single Mode, 144 LC/UPC
FM21-3U-PP-SM-LA-144	Single Mode, 144 LC/APC
FM21-3U-PP-M2-LC-144	Multi Mode(OM2), 144 LC/UPC
FM21-3U-PP-M3-LC-144	Multi Mode(OM3), 144 LC/UPC
FM21-3U-PP-M4-LC-144	Multi Mode(OM4), 144 LC/UPC
FM21-3U-PP-SM-E2-72	Single Mode, 72 E2000/UPC
FM21-3U-PP-SM-EA-72	Single Mode, 72 E2000/APC

Splice to Patch	
Order Code	Description
FM21-3U-SP-SM-SC-72	Single Mode, 72 SC/UPC
FM21-3U-SP-SM-SA-72	Single Mode, 72 SC/APC
FM21-3U-SP-M2-SC-72	Multi Mode(OM2), 72 SC/UPC
FM21-3U-SP-M3-SC-72	Multi Mode(OM3), 72 SC/UPC
FM21-3U-SP-M4-SC-72	Multi Mode(OM4), 72 SC/UPC
FM21-3U-SP-SM-LC-144	Single Mode, 144 LC/UPC
FM21-3U-SP-SM-LA-144	Single Mode, 144 LC/APC
FM21-3U-SP-M2-LC-144	Multi Mode(OM2), 144 LC/UPC
FM21-3U-SP-M3-LC-144	Multi Mode(OM3), 144 LC/UPC
FM21-3U-SP-M4-LC-144	Multi Mode(OM4), 144 LC/UPC
FM21-3U-SP-SM-E2-72	Single Mode, 72 E2000/UPC
FM21-3U-SP-SM-EA-72	Single Mode, 72 E2000/APC

## Dimensions & Accessories



## Accessories

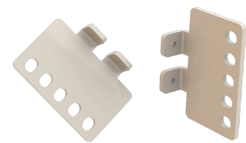
1U (19" to 21") Extension Kit



2U (19" to 21") Extension Kit



3U / 4U (19" to 21") Extension Kit



## Contact Us

### North America

#### World Headquarters:

##### The CopperOn Company

2100 M ST NW, Washington DC 20037, USA.

**Tel:** (202) 594 3140

**Fax:** (202) 594 3141

**Email:** [contactHQ@copperon.com](mailto:contactHQ@copperon.com)

**Website:** [www.copperon.com](http://www.copperon.com)

#### Engineering Office:

##### The CopperOn Company

1001 N Fillmore St., Arlington VA 22201, USA.

**Email:** [contactRD@copperon.com](mailto:contactRD@copperon.com)

**Website:** [www.copperon.com](http://www.copperon.com)

### Asia:

#### Singapore

##### The CopperOn Pte Ltd.

Scotts Road, #26-10, SGAW Centre, Singapore 228208

**Tel:** +65 96338723

**Fax:** +65 6734 3706

**Email:** [contactAP@copperon.com](mailto:contactAP@copperon.com)

**Website:** [www.copperon.com](http://www.copperon.com)

#### MENA

##### The CopperOn Company MEA FZCO

Light Industrial Unit Phase 1, Unit 5- Dubai Silicon Oasis,  
Dubai, United Arab Emirates

**Tel:** +971-4-3344970

**Fax:** +971-4-3344971

**Website:** [www.copperon.com](http://www.copperon.com)

**Email:** [info@copperon.com](mailto:info@copperon.com)

### India

##### The CopperOn Technology Pvt. Ltd

201, Kaivanna Panchwati Circle, Ambawadi,  
Ahmedabad, 380006 Gujrat, India

**Tel:** +91 22 4611 4444

**Fax:** +91 22 4611 4544

**Website:** [contactindia@copperon.com](mailto:contactindia@copperon.com)

**Email:** [www.copperon.com](http://www.copperon.com)

##### CopperOn Technology Pvt. Ltd

130 Udyog Bhavan, Sonawala Road,  
Goregaon (East) Mumbai 400063, India

**Tel:** +91 22 4611 4444

**Fax:** +91 22 4611 4544

**Website:** [www.copperon.com](http://www.copperon.com)

**Email:** [sales.india@copperon.com](mailto:sales.india@copperon.com)